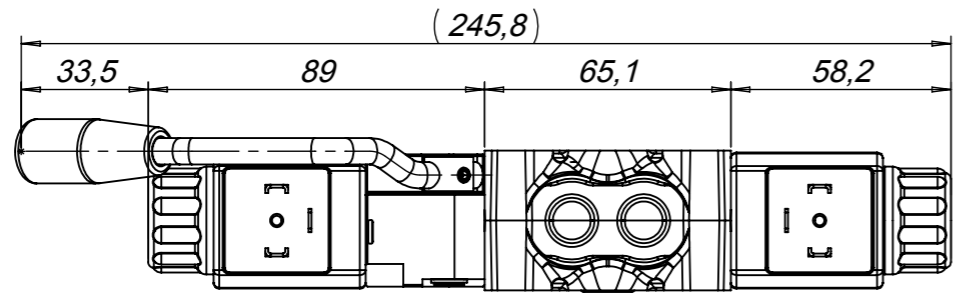
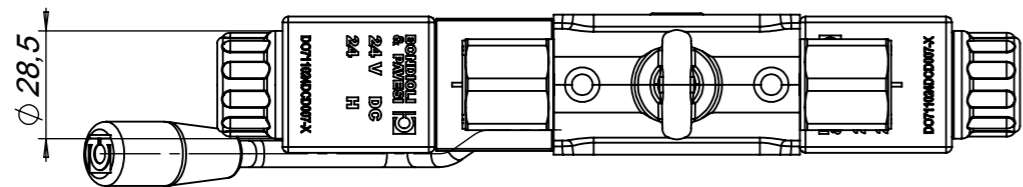
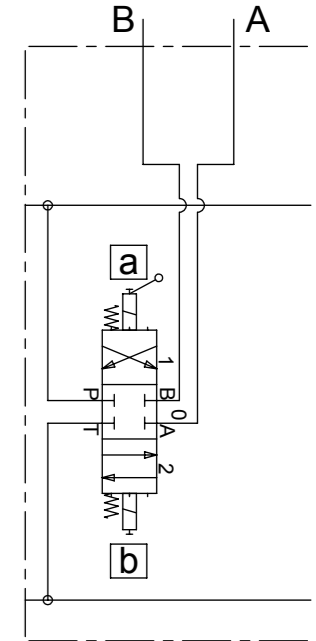
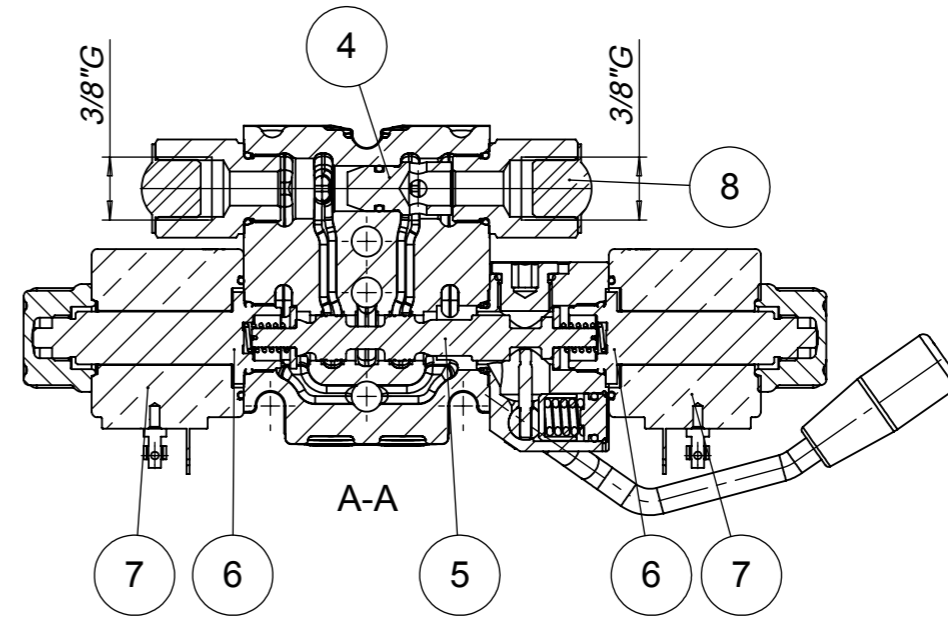
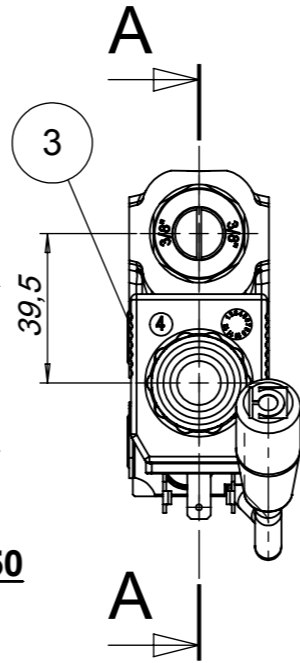
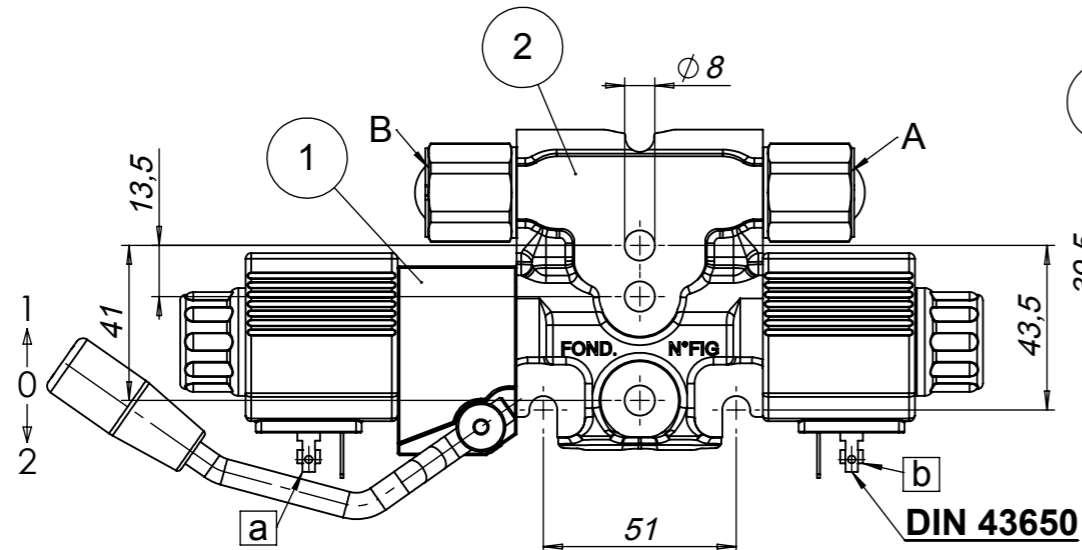
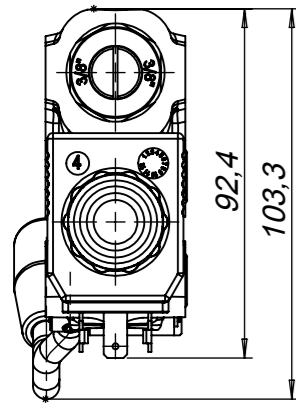


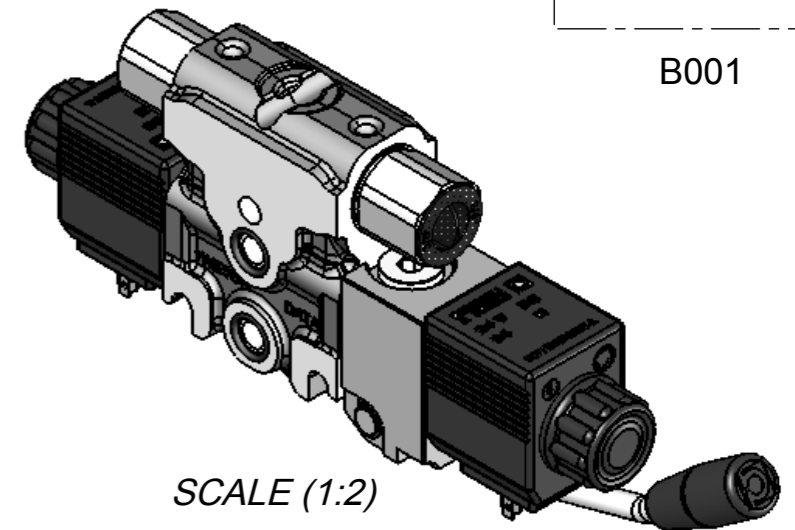
"NON INTERPRETARE IL DISEGNO : SE AVETE DUBBI CHIEDETE / DO NOT SCALE THIS PRINT - PLEASE INQUIRE IF THERE ARE QUESTIONS"



UTENZE PORTS	FILETTATURA THREAD	COPPIA DI SERRAGGIO TIGHTENING TORQUE	TAPPI DA RIMUOVERE PRIMA DELL'USO PLUGS TO BE REMOVED BEFORE USE
A B	3/8"GAS ISO 1179	40-45 Nm	DO38561038



NOTA / NOTE
PROTETTO SUPERFICIALMENTE
SURFACE PROTECTION



B001

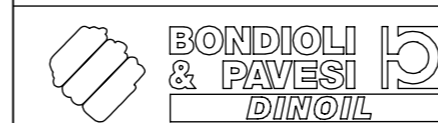
N.	Codice / Code	Q.tà / Q.ty	Descrizione	Description
1	DO57013705	1	KIT AZIONAM. LEVA EMERGENZA PER DNCE50 LEVA SAGOMATA	EMERGENCY LEVER BW05
2	DO4WE5E0015Z0L	1	LAPPATO BW05 CON LAV. PER FISSAGGIO LEVA DI EMERGENZA LATO UNLOADING	FINISHED BW05 WITH DOLDIME013 TO B PORT
3	DO350A10082NBR90	2	OR DF1,78 DI10,82 NBR 90SH	OR DF1,78 DI10,82 NBR 90SH
4	DO582G38F001	1	KIT NIPPLE 3/8"GAS FEMMINA DNCE50 + TAPPO SEPARATORE	KIT NIPPLE 3/8"GAS FEMALE BW05
5	DO29225E01003	1	SPOLA DNCE50 C.1 ELETTRICA CORSA 2.1_2.1 40 l/min PER LEVA DI EMERGENZA	BW05 SPOOL C.1
6	DO770063029	2	KIT PILOTA D.14 M18x1 CORSA 2.1mm	PILOT KIT D.14 M18X1 STROKE 2.1mm
7	DO712024DCD007	2	KIT BOBINA+OR 24V DC 27.8W 20.7OHM PILOTI D14 CONNETTORE DIN43650	KIT COIL + OR
8	DO38561038	2	TAPPO SALVAFILETTO DA 3/8"GAS	PLUG 3/8"GAS

a,b

SPECIFICA BOBINE ON-OFF ON-OFF COILS SPECIFICATION	
VOLTAGGIO (V) VOLTAGE (V)	24
POTENZA (W) POWER (W)	27.8

0	EMISSIONE / ISSUE	08/01/2015	M. NORI
Rev.	Descrizione / Description	Data/Date	Disegnato/Designed by

DESCRIZIONE / DESCRIPTION
BW0500A0 B 001 F A NN NN NN NN B A
BW0500A0 B 001 F A NN NN NN NN B A



PRODOTTO FINITO 20/18/13
END PRODUCT ISO FDSI 4406.2 1999

FOGLIO / SHEET
1

SCALA / SCALE
1:2

DERIVATO DA / DERIVE FROM

CODICE / CODE

DO6DE5EA00405R

REV.